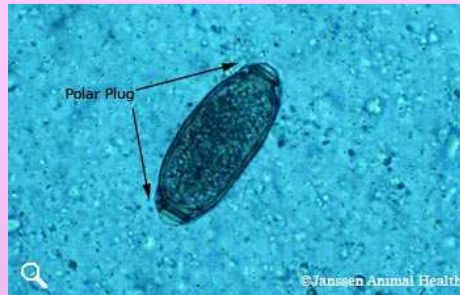


Pollo020-0

## Capillaria spp.



Capillaria spp.

Length 43  $\mu$ m – 65  $\mu$ m

Width 20  $\mu$ m – 35  $\mu$ m

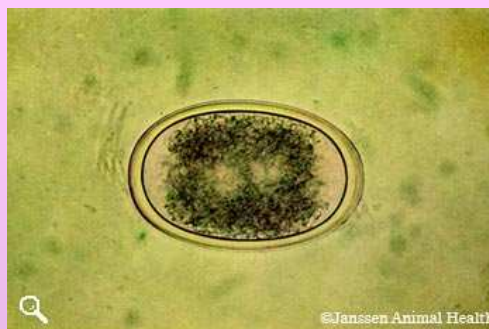
Shell thick, smooth, brown

Slightly barrel-shaped with asymmetrical side-walls Two protruding polar plugs present

Contents granular, unsegmented

1

## Ascaridia spp.



Ascaridia spp.

Length 68  $\mu$ m - 90  $\mu$ m

Width 40  $\mu$ m - 50  $\mu$ m

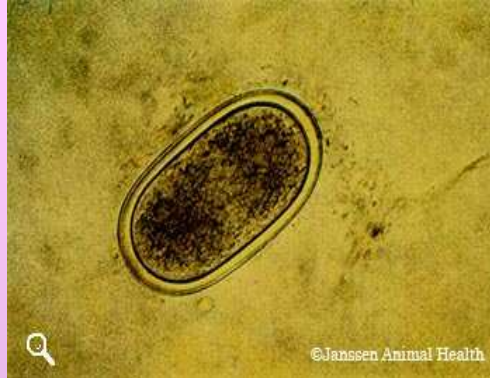
Thick shell, smooth, three layers, slight barrel-shaped side-walls

Contents unsegmented

N.B. Ascaridia and Heterakis eggs are very similar and not easily distinguished.

2

## Heterakis spp.



Heterakis spp.

Length 59  $\mu\text{m}$  –75  $\mu\text{m}$

Width 31  $\mu\text{m}$ – 48  $\mu\text{m}$

Shell thick, smooth side-walls

Contents unsegmented

N.B. Ascaridia and Heterakis eggs are very similar and not easily distinguished.

3

## Choanotaenia sp.



Choanotaenia infundibulum

No uterine capsules, eggs loose in parenchyma

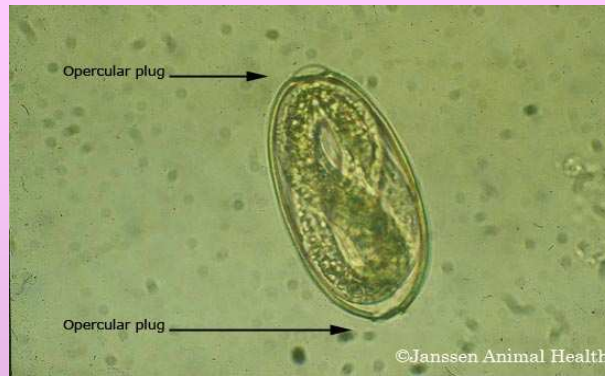
Egg 47  $\mu\text{m}$  x 54  $\mu\text{m}$

Outer shell delicate

Processes present at poles, appear to recede when embryophore fully developed

4

## Syngamus trachea



Syngamus trachea

Length 78  $\mu\text{m}$  – 100  $\mu\text{m}$

Width 43  $\mu\text{m}$  – 60  $\mu\text{m}$

Shell smooth, side-walls slightly barrel-shaped

Opercular plugs at both poles

Morula present of 8 – 16 blastomeres

5

## Trichostrongylus tenuis



Trichostrongylus tenuis

Length 65  $\mu\text{m}$  – 75  $\mu\text{m}$

Width 35  $\mu\text{m}$  – 42  $\mu\text{m}$

Shell thin, smooth

Oval, parallel sides with dissimilar poles

6



Raillietina spp.

Egg 25  $\mu\text{m}$  – 50  $\mu\text{m}$

Shell thick, smooth

Hexacanth embryo present

Eggs shed only when mature segment and egg capsules disintegrate

7

## **Eimeria spp.**



8